



Fitting Instructions for DG0028 Downpipe Grille
KAWASAKI H2 SX 2018-



In This Kit There Should Be
1x Downpipe Grille (DG0028).
2x M5 Nyloc Nuts.
2x M5 Washers 12mm (O/dia).

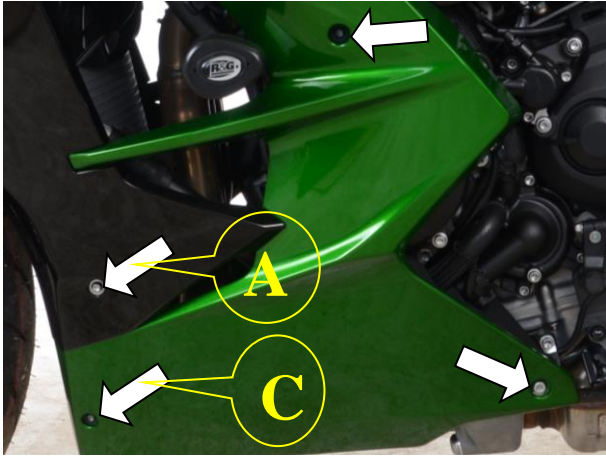
Digital copies of these instructions are available to download from www.rg-racing.com

TOOLS REQUIRED

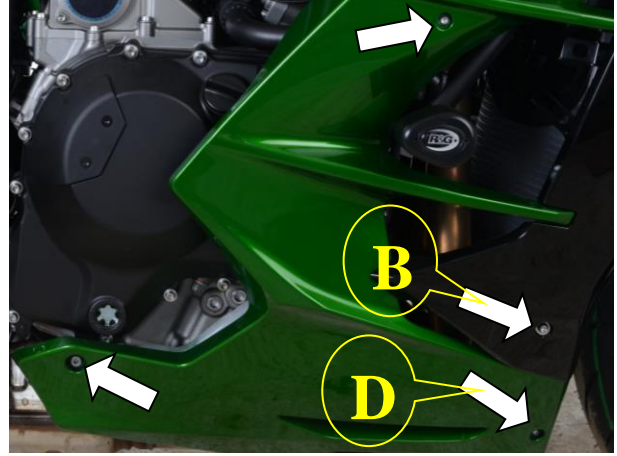
- Socket set to include 8mm socket & wrench.
 - 4 & 5mm A/F Allen keys.

GENERAL TORQUE SETTINGS

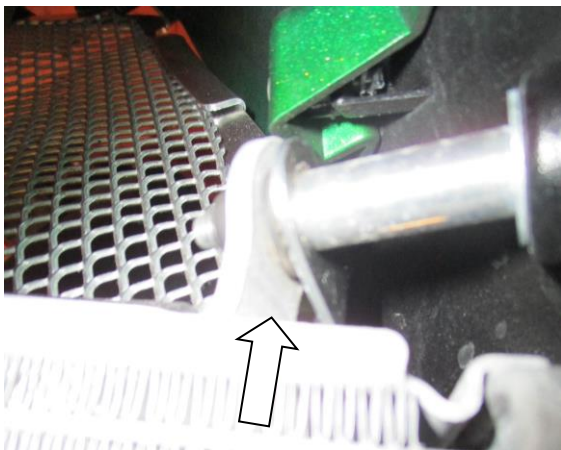
M4 BOLT = 8Nm
M5 BOLT = 12Nm
M6 BOLT = 15Nm
M8 BOLT = 20Nm
M10 BOLT = 40Nm



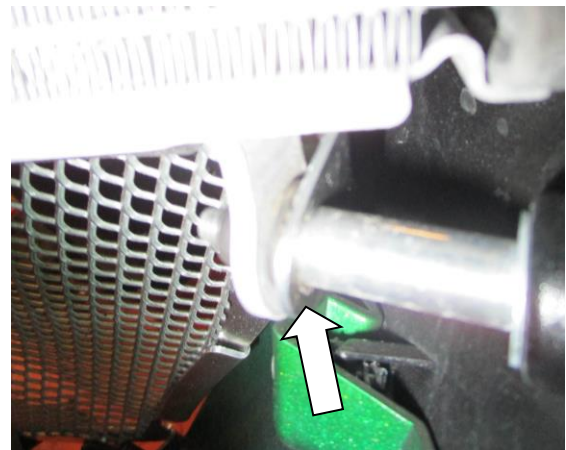
Picture 1



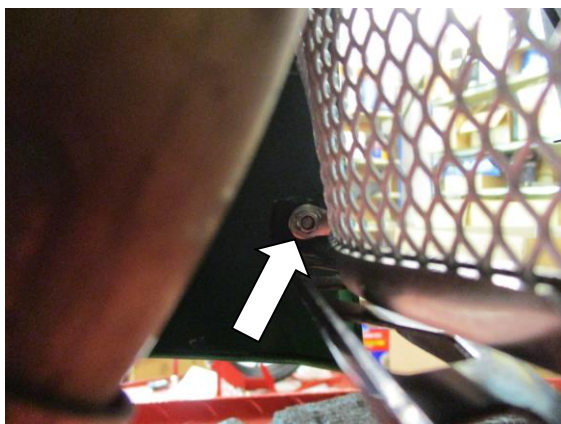
Picture 2



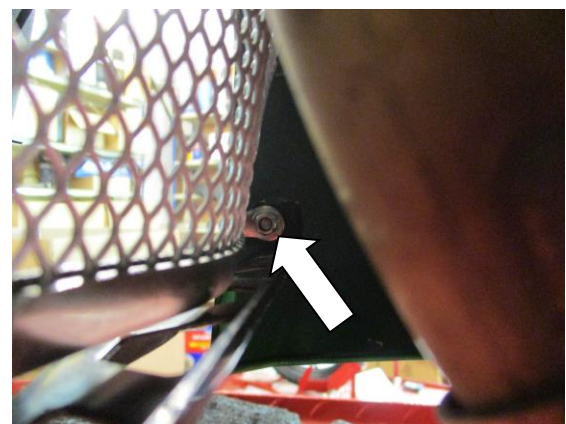
Picture 3



Picture 4



Picture 5



Picture 6

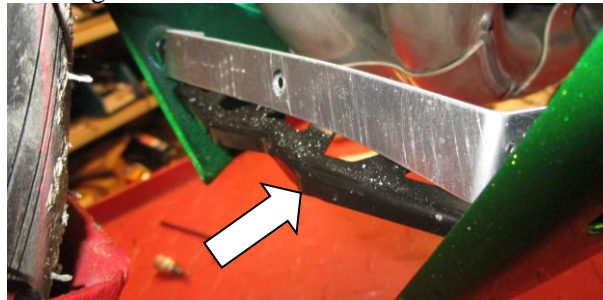


TOOLS REQUIRED

- Socket set to include 8mm socket & wrench.
 - 4 & 5mm A/F Allen keys.

FITTING INSTRUCTIONS

- Remove the four fairing bolts arrowed in picture 1.
- Remove the four fairing bolts arrowed in picture 2.
- Remove the lower fairing central bracket arrowed below.



- Gently ease the fairings out-wards (they have rubber press fit location grommets).
- Offer the downpipe grille into position as shown in the top picture.
- Position the two upper mounting flanges of the downpipe grille over the brackets located at the bottom of the radiator as shown in pictures 3 and 4 (ensuring the holes are aligned).
- Engage but do not tighten the two bolts labelled A and B in pictures 1 and 2 (ensuring they go through the holes in the downpipe grille).
- Position the original lower fairing central bracket (shown above) over the lower mounting flanges of the downpipe grille.
- Engage but do not tighten the two bolts labelled C and D in pictures 1 and 2 (ensuring they go through the holes in the downpipe grille).
- Relocate both fairings into the rubber press fit location grommets.
- Tighten all eight bolts arrowed in pictures 1 and 2.
- Place one washer and nut over each of the exposed threads of the bolts labelled C and D (as shown in pictures 5 and 6) and tighten the nuts while ensuring the bolts remain tight. **Do not overtighten – the nyloc nuts will hold it tight**

ISSUE 1 26/010/2018 (NSY)

CONSUMER NOTICE

The catalogue description and any exhibition of samples are only broad indications of the Products and R&G may make design changes which do not diminish their performance or visual appeal and supplying them in such state shall conform to the order. The Buyer acknowledges no representation or warranty (other than as to title) has been given or will apply to the Products other than those in R&G's order or confirmation and the Buyer confirms it has chosen the Products as being of merchantable quality and suitable for its particular purposes. Where R&G fits the Products or undertakes other services it shall exercise reasonable skill and care and rectify any fault free of charge unless the workmanship has been disturbed. The Buyer is responsible for ensuring that the warranty on the motorcycle is not affected by the fitting of the Products. On return of any defective Products R&G shall at its option either supply a replacement or refund the purchase money but shall not be liable if the Products have been modified or used or maintained otherwise than in accordance with R&G's or manufacturer's instructions and good engineering practice or if the defect arises from accident or neglect.

Other than identified above and subject to R&G not limiting its liability for causing death and personal injury, it shall not be liable for indirect or consequential loss and otherwise its liability shall be limited to the amounts paid by the Buyer for the Products or the fitting or service concerned. These terms do not affect the Buyer's statutory rights.

R&G RACING RETURNS POLICY (NON-FAULTY GOODS)

Returns must be pre-authorised (if not pre-authorised the return will be rejected). Goods may only be returned direct to us if they were purchased direct from us (customer must prove if necessary). Otherwise to be returned to original vendor. Goods must be in re-sellable condition, in the opinion of R&G Racing. All returns are subject to a 25% restocking and handling fee (25% of the gross value exc. P&P – at the prevailing price at time of purchase). The customer must pay any and all carriage charges. No returns of discontinued products, unless within 14 days of purchase. This policy does not affect your statutory rights and does not refer to faulty goods.

R&G

Unit 1, Shelley's Lane, East Worldham, Alton, Hampshire, GU34 3AQ

Tel: +44 (0)1420 89007 Fax: +44 (0)1420 87301 www.rg-racing.com Email: info@rg-racing.com



Notice de montage DG0028 Grille de collecteur d'échappement
KAWASAKI H2 SX 2018-



Le kit doit contenir :

- 1 x Grille de collecteurs d'échappement (DG0028).
- 2x M5 Écrous.
- 2x M5 Rondelles 2mm (O/dia).

Notice disponible au téléchargement sur www.rg-racing.com

OUTILS REQUIS

- Clé à cliquet + douille 8mm.
- Clé Allen 4 & 5mm.

VALEURS DE SERRAGE RECOMMANDEES

M4 BOULON = 8Nm
M5 BOULON = 12Nm
M6 BOULON = 15Nm
M8 BOULON = 20Nm
M10 BOULON = 40Nm

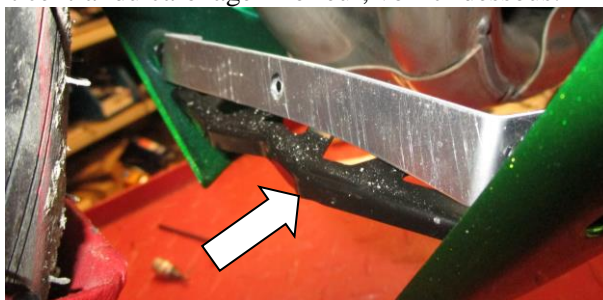


OUTILS REQUIS

- Clé à cliquet + douille 8mm.
- Clés Allen 4 & 5mm.

NOTICE DE MONTAGE

- Enlever les 4 boulons de fixation du carénage, voir photo 1.
- Enlever les 4 boulons de fixation du carénage, voir photo 2.
- Enlever le support central du carénage inférieur, voir ci-dessous.



- Orientez doucement les carénages vers l'extérieur (ils sont dotés d'œillets ajustables en caoutchouc).
- Monter la grille de protection en position, voir photo du dessus.
- Positionner les 2 brides de fixation supérieures de la grille sur les supports placés au bas du radiateur, voir photos 3 et 4 (veiller à ce que les trous soient alignés).
- Engager mais ne pas serrer complètement les 2 boulons notés A et B sur les photos 1 et 2 (en veillant à ce qu'ils aillent au fond des trous de la grille de protection).
- Positionner le support central d'origine du carénage inférieur (voir ci-dessus) sur les brides de fixation inférieures de la grille.
- Engager mais ne pas serrer complètement les 2 boulons notés C et D sur les photos 1 et 2 (en veillant à ce qu'ils aillent au fond des trous de la grille de protection).
- Replacer les 2 carénages dans les œillets en caoutchouc.
- Serrer les 8 boulons, voir photos 1 et 2.
- Placer une rondelle et un écrou sur chaque extrémité de filetage des boulons notés C et D (voir photos 5 et 6) puis serrer les écrous tout en veillant à ce que les boulons restent en place. **Ne pas trop serrer – les écrous fixent l'ensemble.**

ISSUE 1 26/010/2018 (NSY)

CONSUMER NOTICE

The catalogue description and any exhibition of samples are only broad indications of the Products and R&G may make design changes which do not diminish their performance or visual appeal and supplying them in such state shall conform to the order. The Buyer acknowledges no representation or warranty (other than as to title) has been given or will apply to the Products other than those in R&G's order or confirmation and the Buyer confirms it has chosen the Products as being of merchantable quality and suitable for its particular purposes. Where R&G fits the Products or undertakes other services it shall exercise reasonable skill and care and rectify any fault free of charge unless the workmanship has been disturbed. The Buyer is responsible for ensuring that the warranty on the motorcycle is not affected by the fitting of the Products. On return of any defective Products R&G shall at its option either supply a replacement or refund the purchase money but shall not be liable if the Products have been modified or used or maintained otherwise than in accordance with R&G's or manufacturer's instructions and good engineering practice or if the defect arises from accident or neglect.

Other than identified above and subject to R&G not limiting its liability for causing death and personal injury, it shall not be liable for indirect or consequential loss and otherwise its liability shall be limited to the amounts paid by the Buyer for the Products or the fitting or service concerned. These terms do not affect the Buyer's statutory rights.

R&G RACING RETURNS POLICY (NON-FAULTY GOODS)

Returns must be pre-authorized (if not pre-authorized the return will be rejected). Goods may only be returned direct to us if they were purchased direct from us (customer must prove if necessary). Otherwise to be returned to original vendor. Goods must be in re-sellable condition, in the opinion of R&G Racing. All returns are subject to a 25% restocking and handling fee (25% of the gross value exc. P&P – at the prevailing price at time of purchase). The customer must pay any and all carriage charges. No returns of discontinued products, unless within 14 days of purchase. This policy does not affect your statutory rights and does not refer to faulty goods.

R&G

Unit 1, Shelley's Lane, East Worldham, Alton, Hampshire, GU34 3AQ

Tel: +44 (0)1420 89007 Fax: +44 (0)1420 87301 www.rg-racing.com Email: info@rg-racing.com



Montageanleitung für DG0028 Krümmerschutzgitter
KAWASAKI H2 SX 2018-



Inhalt des Kits

- 1x Krümmerschutzgitter (DG0028)
- 2x M5 selbstsichernde Mutter
- 2x M5 Unterlegscheibe 12mm (O/dia).

Eine digitale Version dieser Montageanleitung kann auf folgender Seite heruntergeladen werden:
www.rg-racing.com

SIE BENÖTIGEN FOLGENDES WERKZEUG

- Steckschlüsselsatz mit 8 mm Steckschlüssel und Verlängerung
 - 4 & 5mm A/F Inbusschlüssel

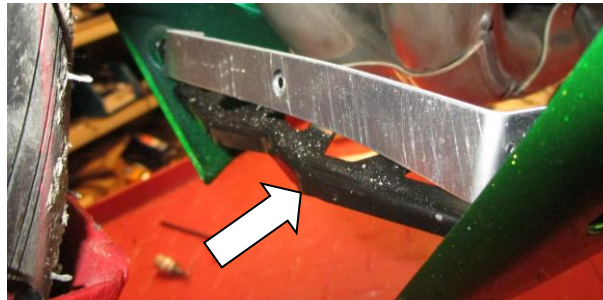
ANZUGSDREHMOMENTE:

- M4 SCHRAUBE = 8Nm
- M5 SCHRAUBE = 12Nm
- M6 SCHRAUBE = 15Nm
- M8 SCHRAUBE = 20Nm
- M10 SCHRAUBE = 40Nm



MONTAGEANLEITUNG

- Entfernen Sie die vier Verkleidungsschrauben, die in Abbildung 1 gekennzeichnet sind.
- Entfernen Sie die vier Verkleidungsschrauben, die in Abbildung 2 gekennzeichnet sind.
- Entfernen Sie die mittlere Halterung für die untere Verkleidung, die unten mit einem Pfeil gekennzeichnet ist.



- Die Verkleidungen vorsichtig nach außen ziehen (diese sind in den Gummitüllen befestigt).
- Das R&G Krümmerschutzgitter in Position bringen, wie im oberen Bild abgebildet.
- Positionieren Sie die zwei oberen Montageflansche des Krümmerschutzgitters auf die Halterungen unten am Kühler – siehe Abbildungen 3 und 4 (bitte darauf achten, dass die Öffnungen miteinander ausgerichtet sind).
- Die zwei Schrauben, die mit “A” und “B” in den Abbildungen 1 und 2 markiert sind, eindrehen aber noch nicht festziehen (bitte darauf achten, dass sie in die Öffnungen im Krümmerschutzgitter eingedreht werden).
- Positionieren Sie die mittlere Halterung für die untere Verkleidung (oben abgebildet) auf die unteren Montageflanschen des Krümmerschutzgitters.
- Die zwei Schrauben, die mit “C” und “D” in den Abbildungen 1 und 2 markiert sind, eindrehen aber noch nicht festziehen (bitte darauf achten, dass sie in den Öffnungen im Krümmerschutzgitter eingedreht werden).
- Die Verkleidungen wieder in den Gummitüllen positionieren.
- Nun alle acht Schrauben, die in den Abbildungen 1 und 2 gekennzeichnet sind, festziehen.
- Je eine Unterlegscheibe und eine Mutter an den hervorstehenden Gewinden der Schrauben, die mit “C” und “D” markiert sind (siehe Abbildungen 5 und 6) und die Mutter befestigen – bitte darauf achten, dass die Schrauben hierbei festgezogen bleiben. **Nicht überdrehen – die selbstsichernden Muttern halten das fest.**

AUSGABE 1 26/010/2018 (NSY)

CONSUMER NOTICE

The catalogue description and any exhibition of samples are only broad indications of the Products and R&G may make design changes which do not diminish their performance or visual appeal and supplying them in such state shall conform to the order. The Buyer acknowledges no representation or warranty (other than as to title) has been given or will apply to the Products other than those in R&G's order or confirmation and the Buyer confirms it has chosen the Products as being of merchantable quality and suitable for its particular purposes. Where R&G fits the Products or undertakes other services it shall exercise reasonable skill and care and rectify any fault free of charge unless the workmanship has been disturbed. The Buyer is responsible for ensuring that the warranty on the motorcycle is not affected by the fitting of the Products. On return of any defective Products R&G shall at its option either supply a replacement or refund the purchase money but shall not be liable if the Products have been modified or used or maintained otherwise than in accordance with R&G's or manufacturer's instructions and good engineering practice or if the defect arises from accident or neglect.

Other than identified above and subject to R&G not limiting its liability for causing death and personal injury, it shall not be liable for indirect or consequential loss and otherwise its liability shall be limited to the amounts paid by the Buyer for the Products or the fitting or service concerned. These terms do not affect the Buyer's statutory rights.

R&G RACING RETURNS POLICY (NON-FAULTY GOODS)

Returns must be pre-authorized (if not pre-authorized the return will be rejected). Goods may only be returned direct to us if they were purchased direct from us (customer must prove if necessary). Otherwise to be returned to original vendor. Goods must be in re-sellable condition, in the opinion of R&G Racing. All returns are subject to a 25% restocking and handling fee (25% of the gross value exc. P&P – at the prevailing price at time of purchase). The customer must pay any and all carriage charges. No returns of discontinued products, unless within 14 days of purchase. This policy does not affect your statutory rights and does not refer to faulty goods.

R&G

Unit 1, Shelley's Lane, East Worldham, Alton, Hampshire, GU34 3AQ

Tel: +44 (0)1420 89007 Fax: +44 (0)1420 87301 www.rg-racing.com Email: info@rg-racing.com